



Red Lane, Todber

Pre-liquidation sale – all offers to be received within 7 days of the viewing day, with completion required on or before 14 February 2026.

A rare opportunity to purchase a brand new detached family home, offering contemporary accommodation over three floors and enjoying a pleasant lane-side setting with views across the Blackmore Vale and towards Duncliffe Wood. The property provides around 2669 sq. ft of well-planned space and combines modern design with a peaceful rural position that remains convenient for local amenities. Finished to a high standard, the interior includes quality fittings, recessed lighting and limestone tiled flooring to the main reception hall and the open-plan living area. The kitchen features soft-closing units and built-in appliances, while the bathroom suites add a touch of luxury. An air source heat pump enhances energy efficiency.

The layout is ideal for family living, with five generous bedrooms, three of which have en-suite facilities. The ground floor includes flexible reception areas that may be adapted to individual needs, together with a study for home working and a further room suitable as a playroom, boot room or pet space. The open-plan living, dining and kitchen area provides a sociable environment with a seamless flow between each space, well suited to everyday life and entertaining.

Outside, there is generous parking for several vehicles, including room for a caravan, boat or motorhome, and planning permission has been granted for a large garage. The garden is laid to grass and offers scope for landscaping, backing onto fields which enhance the sense of space and outlook. The property offers the benefits of countryside living while remaining accessible, and is ready for occupation.

As part of the sale conditions, offers must be submitted within seven days of the viewing day, with completion on or before 14 February 2026.





Accommodation

Inside

On the ground floor there is a contemporary front door that opens into a spacious and welcoming entrance hall with oak doors to all rooms and bespoke oak staircase with glass balustrades leading to the galleried first floor landing. The sitting room enjoys a double outlook with plenty of room for settees and armchairs as well as adding a feature fireplace, if desired. The study overlooks the rear garden. There are ethernet ports throughout to facilitate faster internet access.

The main hub of the household is a large open plan living space with room for a family and dining area. There are two sets of tri-folding doors that open to the rear decked seating area and views over the rear garden to the adjoining countryside.

The kitchen area is fitted with a range of soft closing Shaker style units consisting of floor cupboards, separate drawer unit, pull out bin store and eye level cupboards as well as a tall larder cupboard. There is a generous amount of wood work surfaces with matching upstand and inset double Butler style sink with a Quooker swan neck, instant hot water mixer tap.

The built in appliances include an eye level double electric oven, induction hob with extractor hood above, dishwasher and separate larder fridge and freezer.

The central island has a wood surface with deep drawers and a wine cooler underneath plus a breakfast area. Throughout the open plan living space the floor is laid to stylish limestone tiles.

Also on the ground floor there is a large room that lends itself to many usages - great boot room or dog

room or playroom. From this room there are doors to a utility space, airing cupboard and to the rear garden. In addition, there is a ground floor cloakroom.

On the first floor there is the family bathroom and three double bedrooms, all with en-suite shower rooms. The bathroom is fitted with an up-to-date suite consisting of wall hung vanity wash hand basin with sensor mirror above, low level WC with dual flush facility and double ended bath with central mixer tap. There is also a large walk-in shower cubicle with a mains shower and choice of shower head. The walls and floor are laid to tiles. From the first floor there are some delightful views over the countryside.

From the first floor the bespoke staircase rises to the galleried landing, which has access to two further generously sized bedrooms - both enjoying rural views.

Outside

Parking

The property is approached from the lane onto a gravelled area, which leads to the house's own parking space. There is enough room to park multiple vehicles and for a caravan or boat to be stored plus the benefit of additional planning permission for a 2.5 car garage, which has been granted. There is also an electric charging point.

Garden

There is access from both sides of the house to the large rear garden. There are two seating areas - one laid to paving stone and the other to decking. The garden is laid to grass and offers a blank canvas for your own landscaping design. The garden adjoins countryside and benefits from a lovely outlook and a sunny aspect.

Useful Information

Energy Efficiency Rating B

Council Tax Band tba

uPVC Double Glazing

Air Sourced Heat Pump

Private Sewage Pant within the grounds

Freehold

No Onward Chain

The property benefits from a 10 year Residential

New Build Latent Defects Insurance Policy

The Location

Todber

The property is located in the small village of Todber in a rural but not isolated position and is within walking distance of Todber Manor Fisheries, which has the finest carp and course fishing in the south. The village lies in between the hill top town of Shaftesbury and the market town of Sturminster Newton, both of which are just about five miles away and offer an excellent range of facilities, including independent shops and chain stores, doctor and dentist surgeries, schooling and a variety of entertainment venues. Just under a mile and half is the well served village of Marnhull where there are everyday facilities, with two primary schools, convenience stores with post office, doctor's surgery with a pharmacy and public houses and churches. The property is also within reach of independent schools, such as Clayesmore and Port Regis.

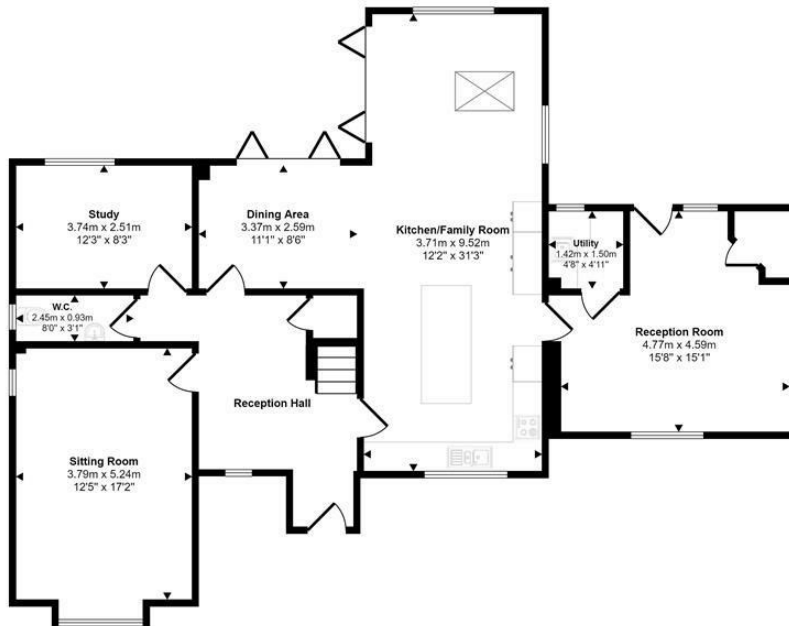
Directions

From Sturminster Newton

Leave Sturminster via Bath Road heading towards Gillingham. Bypass the main village of Marnhull heading towards Gillingham. On a left hand bend turn right to Child Okeford where the property will be found a short distance on the left hand side. Postcode DT10 1HT

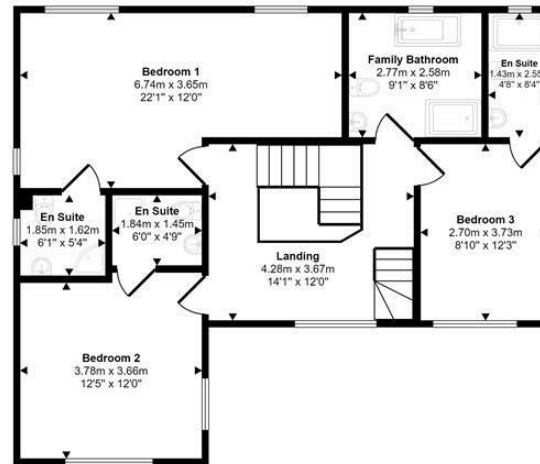


Approx Gross Internal Area
248 sq m / 2669 sq ft

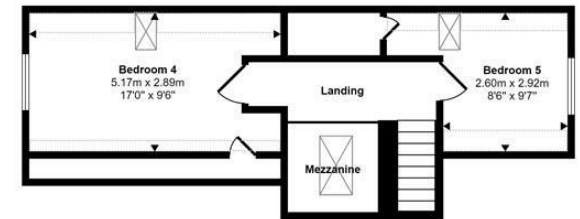


Ground Floor
Approx 123 sq m / 1324 sq ft

Denotes head height below 1.5m



First Floor
Approx 87 sq m / 936 sq ft



Second Floor
Approx 38 sq m / 409 sq ft

This floorplan is only for illustrative purposes and is not to scale. Measurements of rooms, doors, windows, and any items are approximate and no responsibility is taken for any error, omission or mis-statement. Items of items such as bathroom suites are representations only and may not look like the real items. Made with Made Snappy 360.

01258 473030

1 Market House, Market Place, Sturminster
Newton, Dorset, DT10 1AS
sales@mortonnew.co.uk
www.mortonnew.co.uk

DISCLAIMER: These particulars, whilst believed to be accurate are set out as a general outline only for guidance and do not constitute any part of an offer or contract. Intending purchasers should not rely on them as statements or representation of fact, but must satisfy themselves by inspection or otherwise as to their accuracy. We have not carried out a detailed survey nor tested the services, appliances and specific fittings. Room sizes should not be relied upon for carpets and furnishings. The measurements given are approximate. No person in this firm's employment has the authority to make or give any representation or warranty in respect of the property.

MN
MORTON NEW
COUNTRY PROPERTIES